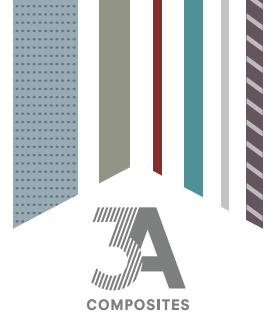


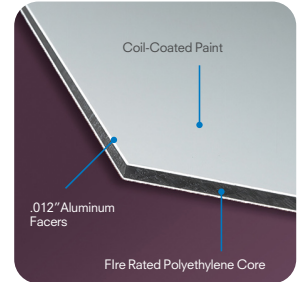
# DIBOND®



The ultimate Aluminum Composite Material (ACM) for the display & signage markets

## DIBOND | Superior Surface, Superior Performance

- Two pre-painted sheets of .012" aluminum bonded to a fire rated (FR) polyethylene core
- Premium, smooth surface is ideal for digital & screen printing as well as mounting
- Can be digitally printed on both sides
- Provides excellent durability in outdoor applications
- Superior surface protects expensive digital and screen-printed graphics
- Can be routed and returned to add dimension, or roll-formed to create dramatic curves
- A range of high gloss & matte color options
- Flattest panel on the market - won't bow or oil can
- Approximately 1/2 the weight of a solid aluminum sheet
- Self extinguishing; Class A fire rating (ASTM E-84)
- UL 879 certified for electric sign components
- Made in the USA (white, black & colors)



DIBOND

## DIBOND BUTLERFINISH Brushed Metals | Quality Meets Design

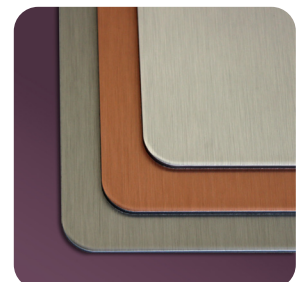
- Specialized manufacturing process creates an embossed, brushed aesthetic
- High-quality brushed effect provides an appealing aesthetic ideal for interior store design, furniture construction, high-end store displays and signage applications
- Extremely unique results when direct digital or screen printed
- Provides the same product & fabrication capabilities of standard DIBOND
- Manufactured in Germany by 3A Composites GmbH



DIBOND COLORS

## NEW! DIBOND Specialty Mirror Finishes | A Reflection of Quality

- Specialized manufacturing process creates a clear, reflective mirror surface
- High-quality finish is perfect for store design, high-end retail displays and signage applications
- Mirror surface doesn't flake off during cutting or fabrication
- Light weight & durable - won't break during transportation or installation
- Less sensitive to pressure than acrylic or glass - no warping
- Approximately 1/2 the weight of a conventional glass mirror
- Manufactured in Germany by 3A Composites GmbH



BUTLERFINISH® Brushed Metals



DIBOND is an excellent solution for exterior applications



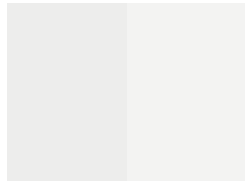
DIBOND MIRRORS

## PRODUCT AVAILABILITY

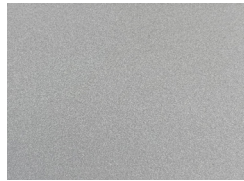
	Gauges	Colors	Sizes
<b>DIBOND</b>	2mm, 3mm, 4mm	White* Jet Black* Ultramarine Blue* British Green* Red* Yellow*  *Available in a high gloss or matte finish	Dark Bronze Aluminum Metallic BUTLERFINISH BUTLERFINISH Copper BUTLERFINISH Steel Mirror Mirror Anthracite  48" x 96" 49.2" x 98.4" 48" x 120" 60" x 120"

Due to the various color combinations, please refer to the website for product availability in the desired thickness and size.

## DIBOND COLORS AND FINISHES



White Gloss / White Matte  
RAL 9003; RGB 236 236 231  
CMYK 0 0 0 0



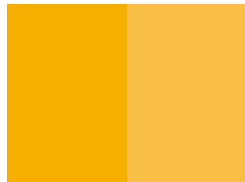
Aluminum Metallic  
RAL 9006; RGB 161 161 160  
CMYK 35 30 30 10



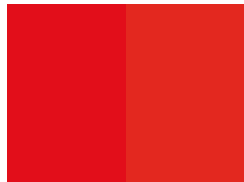
BUTLERFINISH / Aluminum Metallic



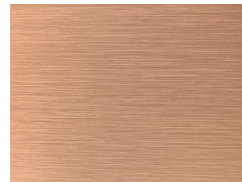
BUTLERFINISH Steel / White Matte



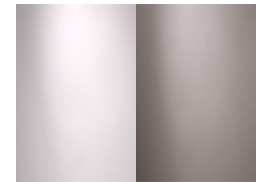
Yellow High Gloss / Yellow Matte  
RAL 1023; RGB 247 181 0  
CMYK 0 25 100 0; PMS 123C\*



Red High Gloss / Red Matte  
RAL 3020; RGB 187 30 16  
CMYK 0 100 100 10; PMS 485C\*



BUTLERFINISH Copper /  
White Matte



Mirror / Mill Finish (left);  
Mirror Anthracite / Mill Finish (right)



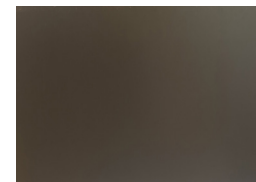
British Green High Gloss / British  
Green Matte  
RAL 6005; RGB 17 66 50  
CMYK 80 5 60 70; PMS 343C\*



Ultramarine Blue High Gloss /  
Ultramarine Blue Matte  
RAL 5002; RGB 0 56 123  
CMYK 100 90 0 10; PMS 287C\*



Jet Black Gloss / Matte  
RAL 9005; RGB 14 14 16  
CMYK 100 40 50 90



Dark Bronze / Aluminum Metallic  
RGB 57 52 47  
CMYK 64 62 67 59

\*PMS colors are not an exact match but are considered to be the closest option