

ALUCOBOND®

# Product Brochure



from domestic &  
imported materials

**Project:** 1081 Juniper - Atlanta, GA  
**ALUCOBOND PLUS:** Hazelnut Mica, JLR Champagne Metallic,  
Graphite Mica, New-Age Dark Bronze Mica  
**Architect:** Brock Hudgins  
**Fabricator:** MillerClapperton

[ALUCOBONDUSA.COM](http://ALUCOBONDUSA.COM) / 800.626.3365



# Who We Are

The ALUCOBOND® brand has been the pioneer in metal facades with over 50 years of reputable performance in architectural cladding. Sought after for its outstanding product attributes such as flatness, formability, durability, and ease of fabrication, ALUCOBOND products allow architects and fabricators to bring distinctive and exciting visions to life. ALUCOBOND PLUS, with its fire retardant core, has been developed exclusively to allow architects and designers to meet today’s fire performance requirements set by the International Building Code (IBC) while using ACM as the material of choice. AXCENT & ALUCOLUX provide opportunities to create innovative designs for metal wall cladding, trim, and many other applications.

Made in our plant in Kentucky, ALUCOBOND is manufactured by 3A Composites USA in a range of sizes and trend-forward colors and finishes, both standard and custom. Our array of options lead to creating inspiring



(left top) Aperture Del Mar, CA © 3A Composites USA  
(left bottom) Black Rock Middle School, PA © 3A Composites USA  
(right) 150 Lawrence, NY © 3A Composites USA



architectural concepts and influential brand assets. Our Brand Identity Program offers dedicated support for stakeholder communications, expertise in color selection, specification support, a trusted fabricator network worldwide, and longevity in product and life cycle.

3A Composites USA is committed to maximizing the life of our products through adherence to ISO standards. In the production of ALUCOBOND PLUS, strenuous efforts have been implemented to reduce energy and water consumption, increase productivity, reduce waste and therefore significantly reducing CO<sub>2</sub> emissions on a continual basis.

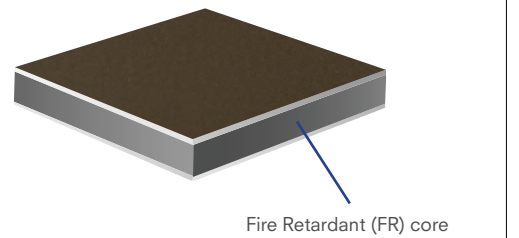
[Learn how ALUCOBOND](#) has been *giving shape to great ideas* by leading the world in design innovation, and continually adapting to the needs of the growing architectural community.

In 2025, ALUCOBOND PLUS successfully met the rigorous conditions of NFPA 285 acceptance with up to 7-inch air cavity as standard with mineral wool as the exterior insulation - the first of it’s kind in the ACM industry, and a breakthrough after years of investment and development. Visit our [alucobondusa.com](https://alucobondusa.com) for more details.

# ALUCOBOND Products

## ALUCOBOND® PLUS

ALUCOBOND PLUS 4mm ACM is comprised of two sheets of smooth 0.020” aluminum thermo-bonded to a solid, fire retardant core. Developed exclusively to meet fire performance requirements while providing the benefits & versatility of ACM.



Product Properties	
Thickness of aluminum skin	0.020” (nominal)
Product thickness	0.157” (4mm nominal)
Weight	1.56 lb/ft²
Standard sheet dimension*	62” x 196”
Maximum width	62”
Maximum length	400”

\* Exceptions to standard dimensions include mirror, print, and anodized finishes. Refer to product range table on page 7. Sheets may be fabricated to meet custom panel sizes within maximum width and length above.

## ALUCOBOND® EasyFix® System

ALUCOBOND EasyFix is a cost-effective installation method. The simple installation method utilizes an innovative design for attachment of ALUCOBOND PLUS panels. The design provides an aesthetic solution similar to traditional ACM systems.

- ALUCOBOND EasyFix must be used with:
- ALUCOBOND PLUS
  - ALUCOBOND EasyFix: Clips or Rails

Product Properties	
System Weight	1.9 lb/ft²
Max Panel Width Surface*	36”
Maximum sheet width/length	62” / 400”
Clip length	3”
Rail length	12’

\* Project specific engineering required for wider panel applications.



## AXCENT™

AXCENT 0.040” thick flat aluminum sheet is excellent for any building project that requires metal trim details, including but not limited to drip edge and parapet coping for roof systems, sill, head, and jamb for curtain wall and window systems.

## ALUCOLUX®

ALUCOLUX 0.063” and 0.080”thick flat aluminum sheets are an excellent option for metal wall panels and cladding installed over solid substrates or hat channels. It is also ideal for metal trim, soffits and columns that require larger spans and demand durability. ALUCOLUX 0.063” and 0.080”materials may be formed utilizing route and return or brake-bend methods for dynamic curves.

		Product Properties		
		AXCENT™	ALUCOLUX®	
		0.040” (1 mm)	0.063” (1.6 mm)	0.080” (2 mm)
Standard Width*		48.0”	60.0”	60.0”
Standard Length*		120.0”	120.0”	120.0”
Custom Length (minimums apply)		64”- 192”	64”- 192”	64”- 192”
Weight		0.56 lb/ft2	0.90 lb/ft2	1.14 lb/ft2

\* width tolerance ± 0.00625”; length tolerance ± 0.125”

## ALUCOBOND® FaceFastened System

ALUCOBOND FaceFastened is a simple, but high performance architectural cladding system that combines a sleek, modern aesthetic with superior durability and ease of installation.

Component	Material	Color/finish	Width	Length	Weight
ALUCOBOND PLUS Panel	4mm ACM	90 Standard Finishes or Custom	Customized Widths Between 6” - 62”	Custom-ized Lengths Between	1.56 lb/ft2
ALUCOBOND FaceFastened Joint-Rail	Extruded Aluminum	Black	4.25”	8’	0.502 lbs/ft
ALUCOBOND FaceFastened Rail (Start/End/Mid)	Extruded Aluminum	Black	3.19”	8’	0.409 lbs/ft
ALUCOBOND FaceFastened Attachment Screw	304 Stainless	Color Match to Design	0.472” (head width)	0.825”	1.5 lbs. per 250ct.



# Features & Benefits



**86 STOCKED ACM COLORS**  
Complementary flat aluminum sheet colors available.



**FLATNESS AND RIGIDITY**  
Meet design intent without the appearance of oil canning.



**LIGHTWEIGHT**  
Lighter than traditional construction materials, allowing for fast and easy installation.



**DURABLE**  
ALUCOBOND is certified for a service life of 50 years minimum.



**FORMABILITY**  
ALUCOBOND may be cold formed in a pyramid roller or press brake.



**EASE OF FABRICATION**  
Compatible with various fabrication machinery and techniques.



**CUSTOM COLOR EXPERTISE**  
We will match hand samples, Pantone®, RAL, NCS or other paint code reference in desired gloss levels and textures.



**PERFORATION CAPABILITIES**  
Solid, mica and metallic finishes may be perforated in geometric, slotted or customized patterns.



**CONTRIBUTES LEED POINTS**  
ALUCOBOND PLUS, AXCENT, & ALUCOLUX contribute toward LEED credit for recycled content.



**ZERO VOC'S EMITTED IN USE**  
Zero VOC's are emitted from installed ALUCOBOND PLUS, ALUCOLUX, & AXCENT panels. Additionally, panels are coil-coated in a factory that captures & destroys 99% of VOC's.



**EPD MEETS ISO STANDARDS**  
ALUCOBOND has an industry Environmental Product Declaration (EPD) in accordance with International ISO Standards, certifying a service life of 50 years.



**RECYCLABLE**  
All components of ALUCOBOND PLUS, ALUCOLUX, & AXCENT are 100% recyclable materials, meaning the core material and the aluminum skins can be returned to the material cycle

# Colors & Finishes



ALUCOBOND is stocked in 86 trend-forward colors & finishes, availability varies by product type. **Scan or click the QR code to explore the colors in each Collection.**

## The Classic Collection



Color plays an integral role in the architectural environment; the timeless palette in our Classic Collection reflects your passion for what's possible. From classic neutrals to biophilic hues, this line offers a wide range of options to help you *give shape to great ideas*.

## The Natural Collection



Biophilic design conceptualizes space in a way that acknowledges the human need to connect with nature. The finishes in the Natural Collection amplify the organic beauty and character of different elements & materials found in the world around us.

## The Spectra Collection



To add a dynamic element of fascination and movement to any architectural facade, these transitional finishes celebrate the natural color shifts that occur in the world around us – from raw natural elements to the glowing luster and sheen found in modern alloys and luxury finishes.

## The Anodized Collection



In addition to the strength and high-quality appearance that come standard with our collections, this line uses the anodizing process to enhance the intrinsic clarity and beauty of aluminum while creating a harder, smoother, more durable surface.



Brookhaven City Hall, GA ©3A Composites USA (bottom right)  
Disneyland Hotel, CA ©3A Composites USA (top right)  
Hoboken Point, NJ ©3A Composites USA (left)



# Standard Product Range

ALUCOBOND PLUS					
Thickness	4 mm (0.157")				
Width	40"	49.2"	50"	60"	62"
Length	196"	146"	196"	198"	196"
Solids	○		○		●
Micas / Metallics	○		○		●
Color-Changing	○		○		●
Textured	○		○		●
Reflect Mirror		●			
Anodized				●	
Brushed			○		●
Prints			●		

● Stocked   ○ On Request

AXCENT		ALUCOLUX	
Thickness	0.040" (1 mm)	0.063" (1.6 mm)	0.080" (2 mm)
Sheet Size	48" x 120"	60" x 120"	60" x 120"
Solids	●	●	●
Micas / Metallics	●	●	●
Color-Changing	●	●	●
Textured	NA	NA	NA
Reflect Mirror	NA	NA	NA
Anodized	NA	NA	NA
Brushed	NA	NA	NA
Prints	NA	NA	NA

● Stock or Made to Order (MTO)

Please reference the ALUCOBOND Color Library to learn more about Stock and MTO availability.

# Paint Finishes

ALUCOBOND finishes are coated in accordance with AAMA standards which represent the highest performance standards for exterior finishes in the industry. All finishes are backed with a best-in-class warranty covering full replacement or repair costs. All finishes meet AAMA 2605 Standards except SMP which meets AAMA 2604 Standards.

**PVDF (Polyvinylidene Fluoride)** finishes can be produced in either a 2-coat (primer + color coat) or 3-coat (primer + color coat + top coat). Known for its durability and strong performance characteristics PVDF is used to develop a high-quality solid, mica or metallic finish.

**PVDF/FEVE** finish consists of 2 coats of PVDF & a clear coat of FEVE. On our Spectra finishes, the FEVE coat provides a higher gloss level & depending on the viewing angle, different wave-lengths of light are reflected, resulting in an ever-changing color gradient with iridescent highlights.

**SMP (Silicone Modified Polyester)** Paint systems are a blend of polyester & silicon intermediates. SMP coatings deliver an excellent balance of exterior gloss, and color retention with resistance to stains, chalking, ultraviolet radiation, weather and humidity.

**FEVE (Fluoropolymer Based)** A transparent top coat is applied to the coil, protecting the surface from the elements & preserves the aesthetic of the bare finish. Various tints can be applied to broaden the color palette & add to the aesthetics of a project.

**SDP (Siliconeized Durable Polyester)** A 2-coat (primer + color coat) or 3-coat (primer + color coat + top coat) highly durable architectural coating offered in a wide range of colors, gloss levels, **metallic and mica finishes**. A high-tech polymer based coating offering excellent color and gloss weatherability.

For warranty information please [contact](#) your local ALUCOBOND Sales Manager.



# Applications

## Exterior Wall Cladding | Materials: 4mm, 0.063", 0.080"

- ALUCOBOND’s flatness, rigidity, lightweight and formability support a plethora of design intents
- Our versatility of stocking colors & finishes gives designers the freedom to mix finishes without sacrificing budget
- ALUCOBOND can withstand weather conditions while maintaining its aesthetic long-term

Arizona State University (ASU), AZ (below) © 3A Composites USA



## Soffit & Canopy | Materials: 0.040", 0.063", 0.080"

- The flatness, lightweight and rigidity of ALUCOBOND PLUS panels make it a great option for soffit and canopy applications
- AXCENT can be roll formed or pressed to add strength and create interlocking joints
- ALUCOBOND PLUS, ALUCOLUX, & AXCENT can also be easily ventilated to increase airflow, easily cut for lighting or signage elements, and can be curved along rounded faces
- AXCENT is available in a wide range of colors complementary to PLUS



Arizona State University, AZ © 3A Composites USA

**Quick Glance**  
Application headings identify appropriate material selections.  
4mm - ALUCOBOND PLUS  
0.040" - AXCENT  
0.063" & 0.080" - ALUCOLUX



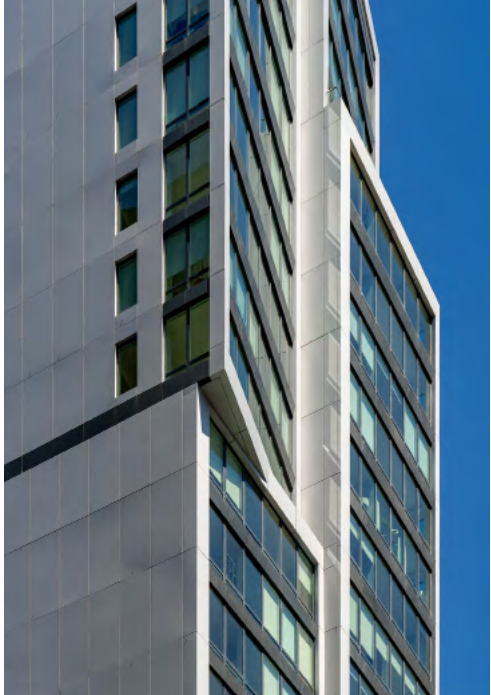
National Center for Civil and Human Rights (right) © 3A Composites USA

## Ceilings | Materials: 0.063", 0.080"

- Class A Fire Rating makes ALUCOBOND PLUS appropriate for interior and exterior uses
- Custom designs can allow for back panel illumination and creative ceiling concepts
- Color-shifting finishes from the Spectra Collection are popular for dynamic ceiling applications



Ysleta Del Sur Pueblo Health & Human Services © 3A Composites USA



2413 3rd Ave © 3A Composites USA

## Interiors | Materials: 4mm, 0.040", 0.063", 0.080"

- Seamless transition from exterior facade to interior design
- Dynamic color palette of 89 stock colors & finishes
- Ability to create unique customizable shapes
- Biophilic hues effortlessly complement surroundings
- Large flat panels inspire clean design
- Custom color capabilities
- Create striking modern designs
- May be used for wall cladding, feature wall, beam wrap, baffles, stairway, architectural ceiling, column cover, entry way, mechanical covering, and more



CSU SPUR Hydro, CO © 3A Composites USA

## ALUCOBOND® EasyFix System for Exteriors & Interiors | Materials: 4mm

- Cost-effective installation method for every wall type.
- Utilizing an innovative design for the attachment of ALUCOBOND PLUS panels, ALUCOBOND EasyFix offers simplicity and efficiency in meeting tight construction schedules
- Trend-forward color options along with customizable panel layouts, reveal options, and widths allow for freedom in design
- The design provides an aesthetic solution similar to traditional ACM systems, combining 2 types of folds
- ALUCOBOND EasyFix is quickly fabricated off-site by a trained and Licensed Fabricator.
- Ships flat to the job site for easy handling. Installation is made simple with a variety of fastening options.



Wendy's, Bahamas © 3A Composites USA

**ALUCOBOND®**  
GIVING SHAPE TO GREAT IDEAS

## Curtainwall and Sun Shades | Materials: ACM, 4mm, 0.063", 0.080"

With a Class A Fire Rating, ALUCOBOND PLUS fire-retardant (FR) ACM panels are ideal for curtainwall applications and offer a variety of benefits:

- Panels are available with one side or both sides finished
- Fins can be custom designed to complement the exterior cladding and reduce solar gain
- Provides continual color flow from curtainwall to vertical ALUCOBOND panels
- Replaces glass to enhance the design aesthetic and reduce project costs
- Used in curtainwall systems that utilize structural silicone, structural tapes or pressure plate
- May be used in spandrel applications to create a unique facade



# Applications

**Quick Glance**  
Application headings identify appropriate material selections.

4mm - ALUCOBOND PLUS  
0.040"- AXCENT  
0.063" & 0.080"- ALUCOLUX

## Flashing / Parapet Cap

Materials: 0.040", 0.063", 0.080"

- ALUCOLUX & AXCENT are easily formed in a variety of machines to create the perfect cap
- ALUCOLUX & AXCENT are available in a wide range of colors complementary to ALUCOBOND PLUS

Genesis of Clear Lake © 3A Composites USA



## Perforation

Materials: 4mm, 0.040", 0.063", 0.080"

- ALUCOBOND PLUS can be used to transform the exterior facade with perforated designs allowing for more light and creative intent
- Custom perforation designs enables new aesthetic possibilities
- Both faces of the panel can be finished with long lasting exterior coatings

Mears Middle School, Anchorage, AK (right)  
©3A Composites USA



## Column Covers | Materials: 4mm, 0.063", 0.080"

- ALUCOBOND PLUS and ALUCOLUX can be easily formed via route and return, rolling, and brake-bends, making for an ideal column cover
- Tight radii can be achieved and weather tightness can be maintained with sealed joints

SHI International Garza Office Building, courtesy of White Construction Company (left)  
Hoboken Point, NJ. ©3A Composites USA (right)

# Testing & Certifications

## ALUCOBOND® PLUS

- WALL ASSEMBLY FIRE TESTING
- CAN / ULC S134\*
  - NFPA 285\*

## TENMAT FF102/50 RAINSCREEN FIREBLOCKING

3A Composites USA, manufacturer of ALUCOBOND®, has achieved significant breakthrough in colaboration with Tenmat USA Fire Protection Solutions. ALUCOBOND® PLUS, when used in rainscreen applications with TENMAT FF102/50 Rainscreen Fireblock, has successfully passed rigorous NFPA 285 testing.

\*Results are based upon tests made with ALUCOBOND PLUS panels in specific wall assemblies. For more information about assemblies that have been tested, please contact technical support: Ryan.VanDyne@3acomposites.com

- N. AMERICAN BUILDING CODE ACCEPTANCE
- IBC
  - National Building Code of Canada
  - State of Florida
  - City of Los Angeles, California

- SUSTAINABILITY DESIGN
- LEED 3
  - LEED v4.0 and 4.1
    - LCA Industry Standard
    - EPD Industry Standard

- ACCEPTED EVALUATION REPORTS
- ICC-ES: 1185\*
    - ASTM D1781
    - ASTM E84, Class A
    - ASTM E331
  - Florida Product Approval: FL29842
  - Underwriters Laboratory: 19980

\*The ASTM standards listed below ICC-ES are examples of applicable tests and do not represent a complete list of standards.

# Attachment Systems

## ALUCOBOND EasyFix

ALUCOBOND EasyFix is an innovative, cost-effective installation method for installing ALUCOBOND PLUS 4mm ACM on multi-story construction. ALUCOBOND EasyFix offers simplicity and efficiency in meeting tight construction schedules. Trend-forward color options along with customizable panel layouts, widths and lengths allow for freedom in design.

### Face Fastened

A Face Fastened system eliminates the need for routing panels, and can provide a clean aesthetic when using fasteners that are painted to match ALUCOBOND panels.

### Edge Capture

Edge Capture systems allow for the least amount of preparation of the ALUCOBOND panels, and can be a great option for feature walls or decoration.

### DryReveal

- This system integrates a 4-sided attachment method with a reveal-joint spline to create a panel to panel connection with no exposed sealants & no exposed fastners
- Pressure Equalizeed rainscreen tested to AAMA 508 standards or Drained and Back Ventilated rainscreen tested to AAMA 509 standards

### Wet Seal

- This system integrates a 4-sided attachment method with continuous foam backer rod and silicone sealed joints to create a panel to panel connection with no exposed fasteners
- Tested to AAMA 501 standards



Deer Valley Residence, UT ©3A Composites USA



3A Composites USA’s integrated management system provides us with an important framework for implementing sustainability initiatives in our business operations. The main constituents of our integrated management system are the areas of safety, health, environment, energy and quality.

“Significant efforts to reduce energy and water consumption, increase productivity, cut down waste and therefore significantly reduce CO<sub>2</sub> emissions are made on a continuous basis.”

Energy Reduction

Efficient handling of energy sources can have a major impact on reducing CO<sub>2</sub>, a key consideration at 3A Composites USA. This is why we have set up an energy management system in accordance with ISO 14001, with the goal of improving efficiency and reducing waste.

Life Cycle

The high durability of ALUCOBOND has proven to last the test of time. With a proven life expectancy of 50 years and more, the high waste associated with replacement of materials is reduced when you choose ALUCOBOND. A wide range of aesthetics and code approved applications enable architects the freedom to explore new and innovative designs while meeting the standards of sustainable planning.

Recycling

ALUCOBOND can be homogeneously dismantled and returned to the reusable material cycle. All components of ALUCOBOND PLUS, ALUCOLUX, and AXCENT are 100 % recyclable, i.e. the core materials and aluminum skins can be returned to the material cycle and used to produce new material. The high material value of aluminum provides a key recycling driver for the economy from a wide range of consumer sources. Aluminum is recyclable to an unlimited extent without losing its characteristics.

VOC and SVOC Emissions

ALUCOBOND PLUS, ALUCOLUX, and AXCENT panels are coil-coated in a factory that captures and destroys volatile organic compounds (VOC’s). This process is accomplished using a regenerative thermal oxidizer in our facility’s paint line. By removing VOC’s in the factory, there is no need for field coating and accompanying VOC’s.

LEED Certification

Since LEED’s introduction in 1998 it has become the most recognizable green building program in the world. LEED focuses on constructing buildings that have minimal impact on the environment during construction, occupation and reclamation, and recognizes that utilizing recycled materials is an important part of minimizing environmental impact.

Third party product certifications for environmental and health declarations in addition to the recycled content of ALUCOBOND PLUS contributes towards a project’s LEED points and accreditation.





# Contact

800.626.3365  
info.usa@3acomposites.com  
www.alucobondusa.com

3A Composites USA Headquarters  
721 Jetton Street, Suite 325  
Davidson, NC 28036

3A Composites USA Manufacturing Facility  
208 West 5th Street Benton, KY 42025



ALUCOBOND® is a registered trademark of 3A Composites USA Inc.  
© 2025 3A Composites USA. All Rights Reserved.

UCSD Theater © 3A Composites USA

[ALUCOBONDUSA.COM](http://ALUCOBONDUSA.COM) / 800.626.3635